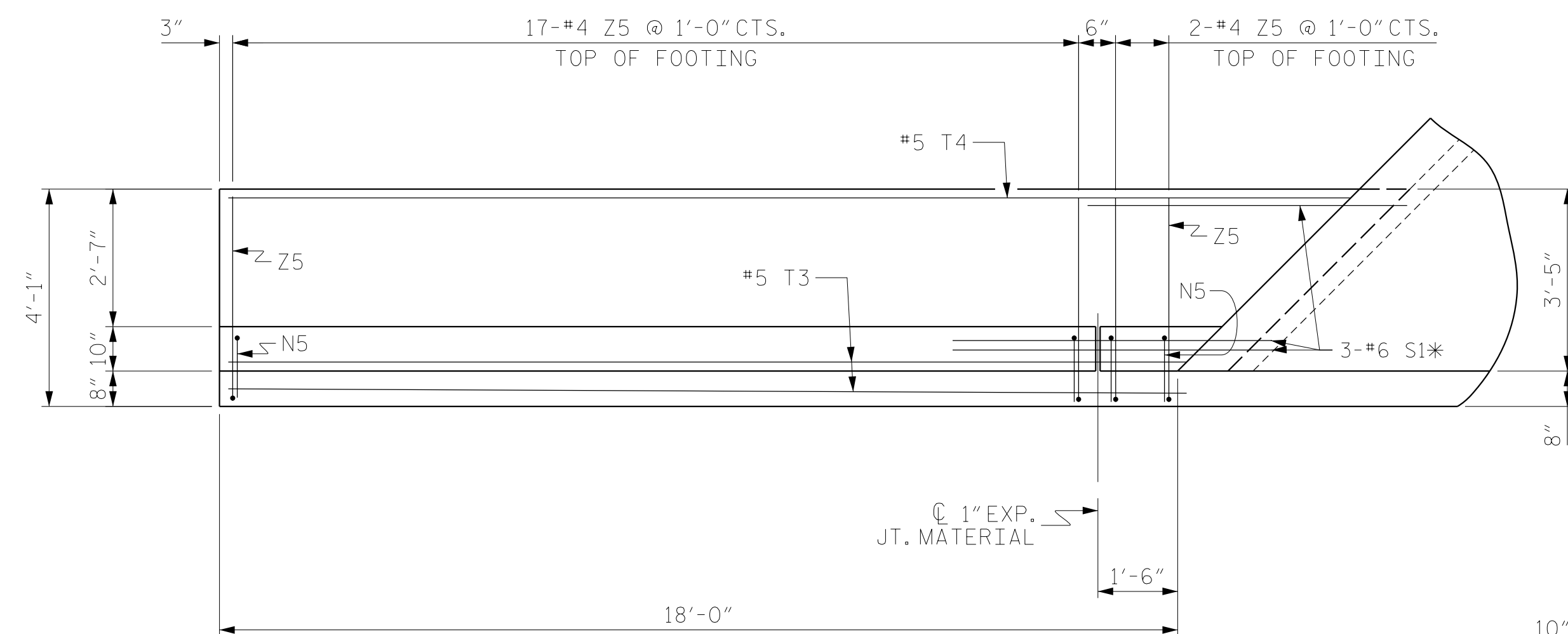
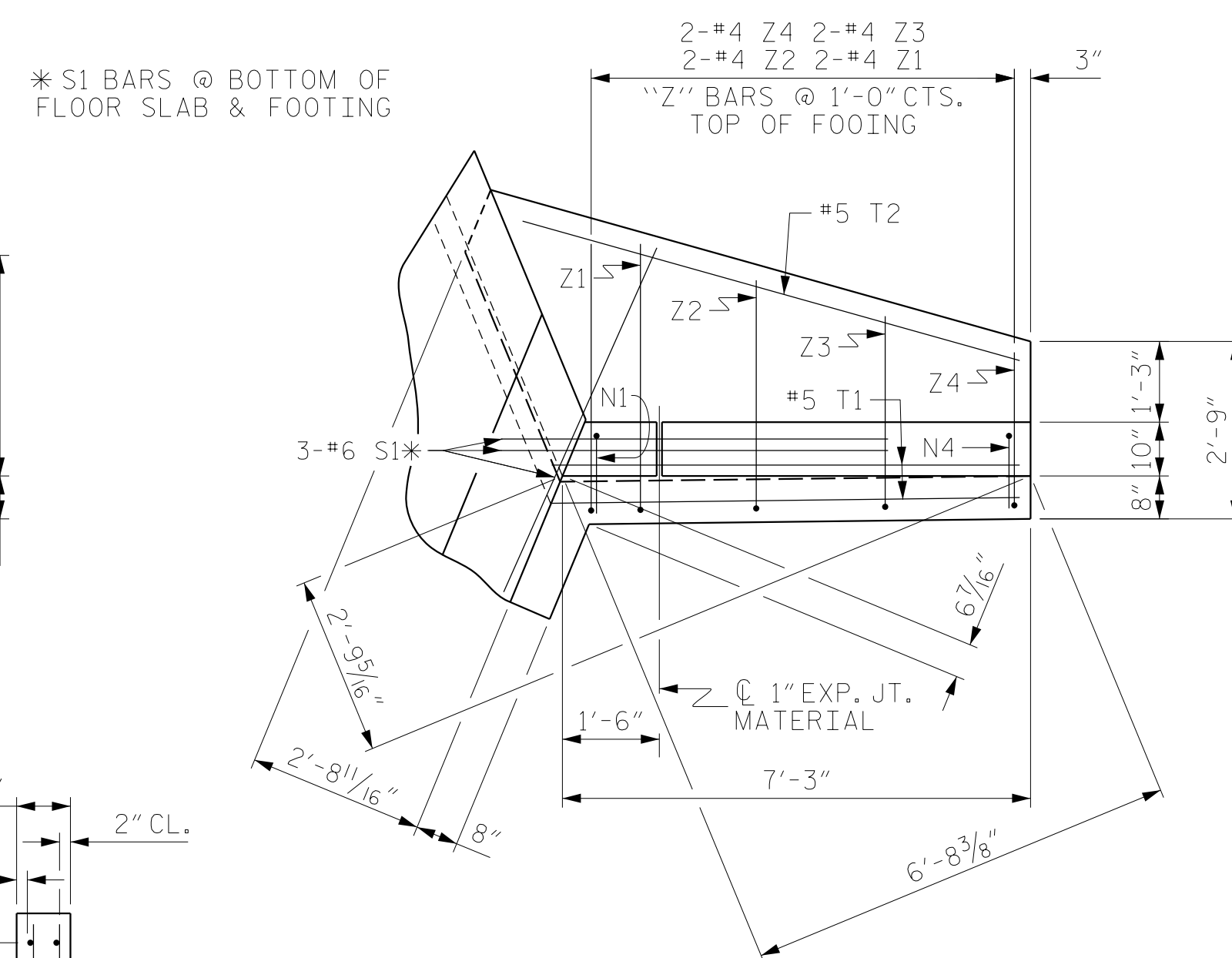


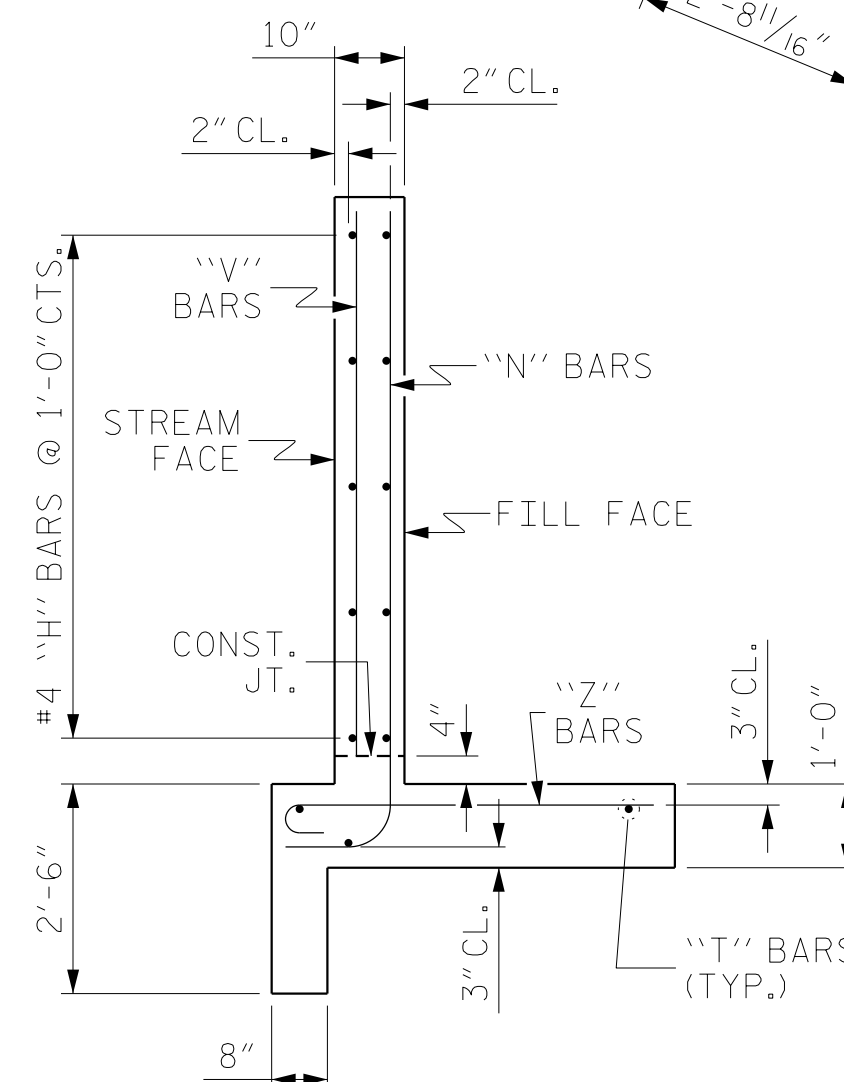
+



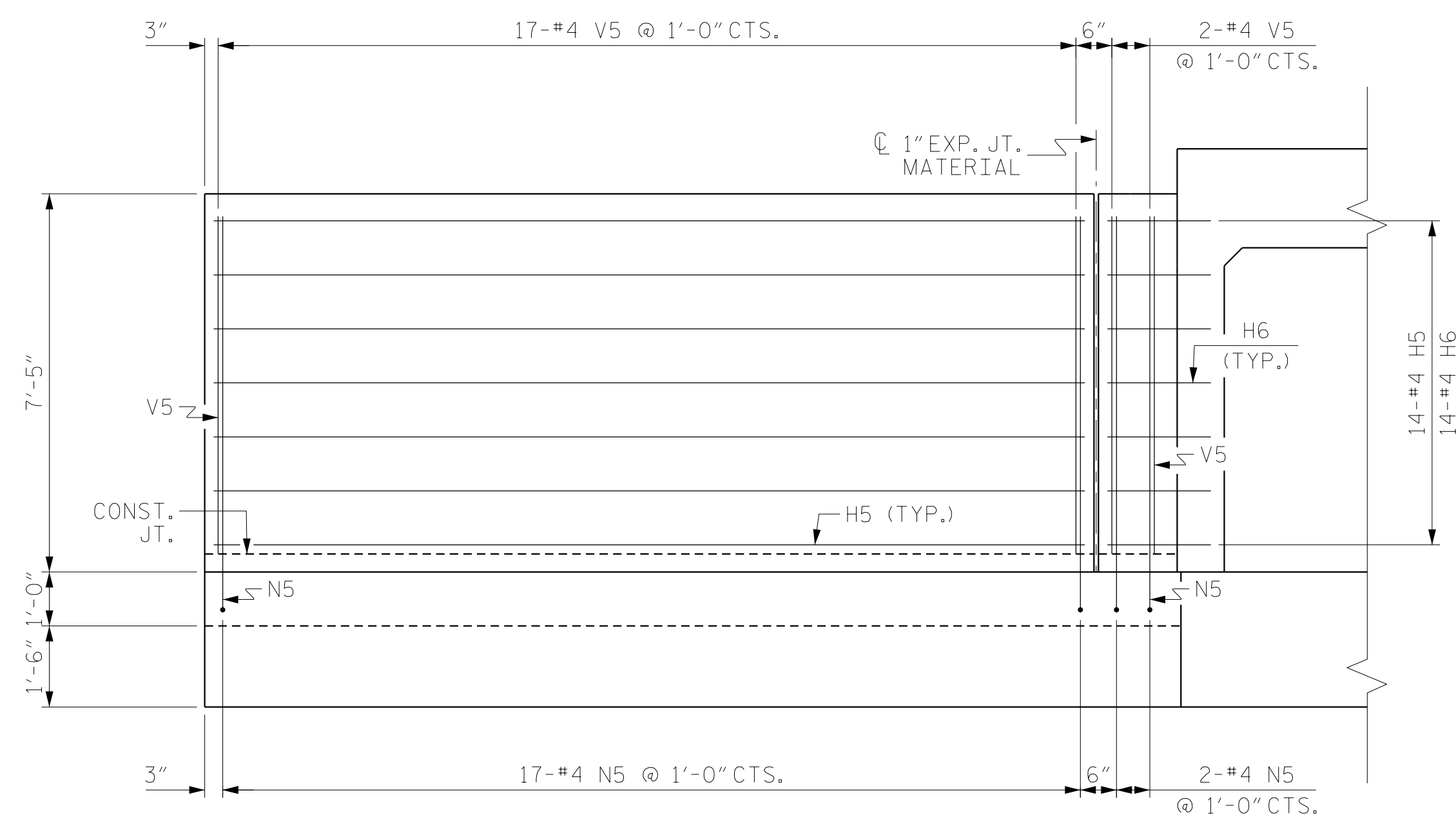
PLAN W1



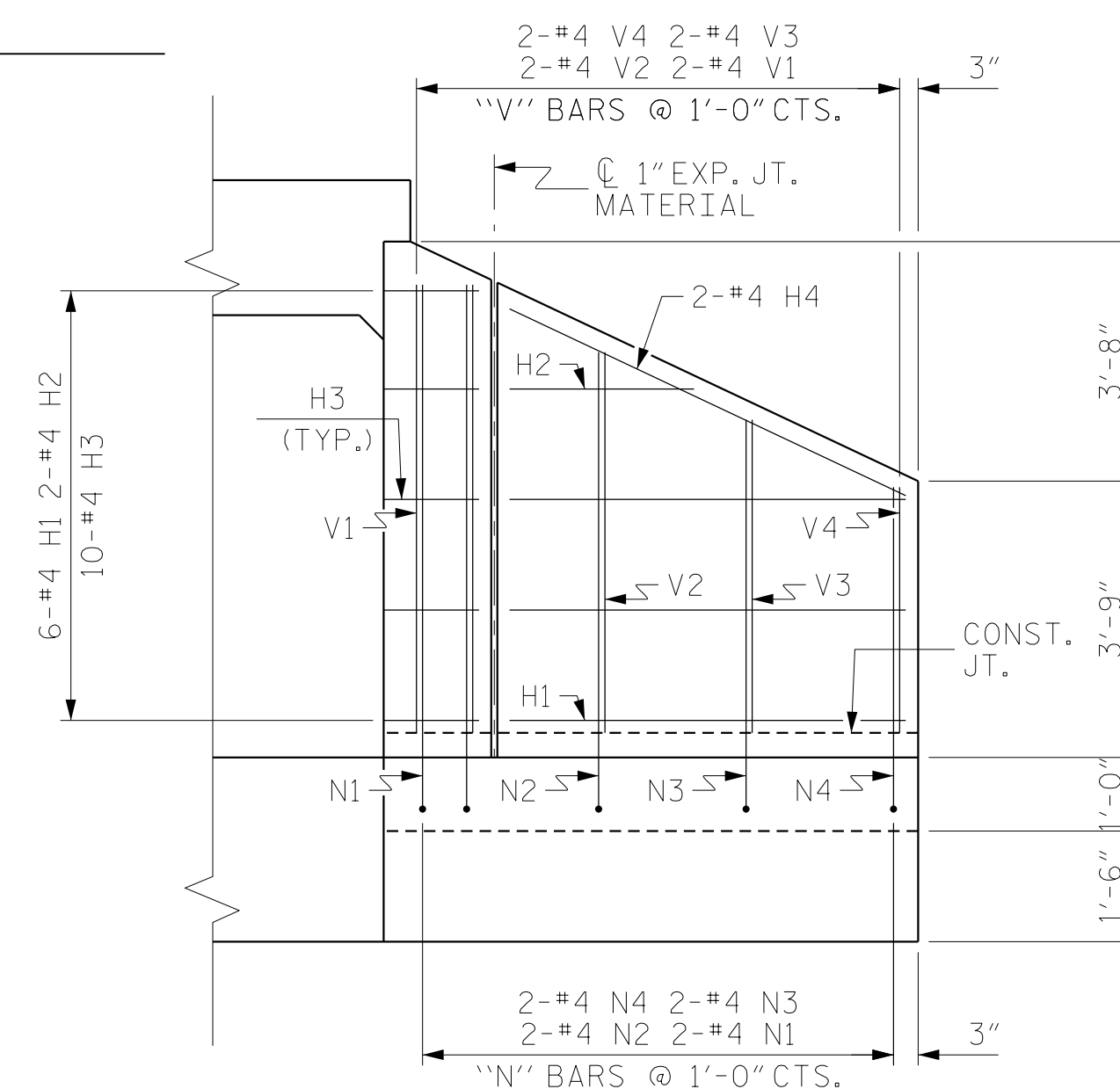
PLAN W2



TYPICAL WING SECTION



ELEVATION W1



ELEVATION W2

1

2'-0"

1'-10 ¹/₈"

1'-3"

9/8"

2

2'-0"

1'-5"

2'-3"

1'-5"

3

6" RAD.

8"

9 1/2"

N1

6'-7 1/2"

N2

5'-9 1/2"

N3

4'-9 1/2"

N4

3'-10 1/2"

N5

7'-5 1/2"

Z1

4'-2"

6"

Z2

3'-7"

6"

Z3

3'-0"

6"

Z4

2'-5"

6"

Z5

3'-9"

6"

4

6"

HK.

ALL BAR DIMENSIONS ARE OUT TO OUT.

BILL OF MATERIAL					
STAGE I					
BAR	NO.	SIZE	TYPE	LENGTH	WEIGHT
H1	6	#4	STR	5'-4"	22
H2	2	#4	STR	2'-6"	4
H3	10	#4	1	3'-3"	22
H4	2	#4	STR	5'-11"	8
H5	14	#4	STR	16'-1"	150
H6	14	#4	2	4'-3"	40
N1	2	#4	3	8'-1"	11
N2	2	#4	3	7'-3"	10
N3	2	#4	3	6'-3"	9
N4	2	#4	3	5'-4"	7
N5	19	#4	3	8'-11"	113
S1	6	#6	STR	6'-0"	54
T1	2	#5	STR	7'-3"	15
T2	1	#5	STR	8'-0"	9
T3	2	#5	STR	18'-0"	38
T4	1	#5	STR	21'-0"	22
V1	2	#4	STR	6'-1"	8
V2	2	#4	STR	5'-2"	7
V3	2	#4	STR	4'-3"	6
V4	2	#4	STR	3'-4"	5
V5	19	#4	STR	6'-11"	88
Z1	2	#4	4	4'-8"	6
Z2	2	#4	4	4'-1"	6
Z3	2	#4	4	3'-6"	5
Z4	2	#4	4	2'-11"	4
Z5	19	#4	4	4'-3"	54
REINFORCING STEEL FOR 2 WINGS					723 LBS
CLASS A CONCRETE					
2 WINGS					10.4 CY
1 HEADWALL					1.2 CY
1 END CURTAIN WALL					1.8 CY
TOTAL					13.4 CY

PROJECT NO. BP14.R002
HAYWOOD COUNTY
 STATION: 13+82.97 -L190-

SHEET 8 OF 10



STATE OF NORTH CAROLINA
DEPARTMENT OF TRANSPORTATION
RALEIGH

INLET - WINGS FOR
CONCRETE BOX CULVERT

H = 6'-0" SLOPE = 2:1
135° SKEW

Inc.	REVISIONS						SHEET NO.
	NO.	BY:	DATE:	NO.	BY:	DATE:	C4-8
	1			3			TOTAL SHEET'S 10
	2			4			

DRAWN BY : _____ N. CUANY DATE : 02/2024
 CHECKED BY : _____ M. ACOSTA DATE : 02/2024
 DESIGN ENGINEER OF RECORD: _____ M. ACOSTA DATE : 08/2025

DOCUMENT NOT CONSIDERED
FINAL UNLESS ALL
SIGNATURES COMPLETED